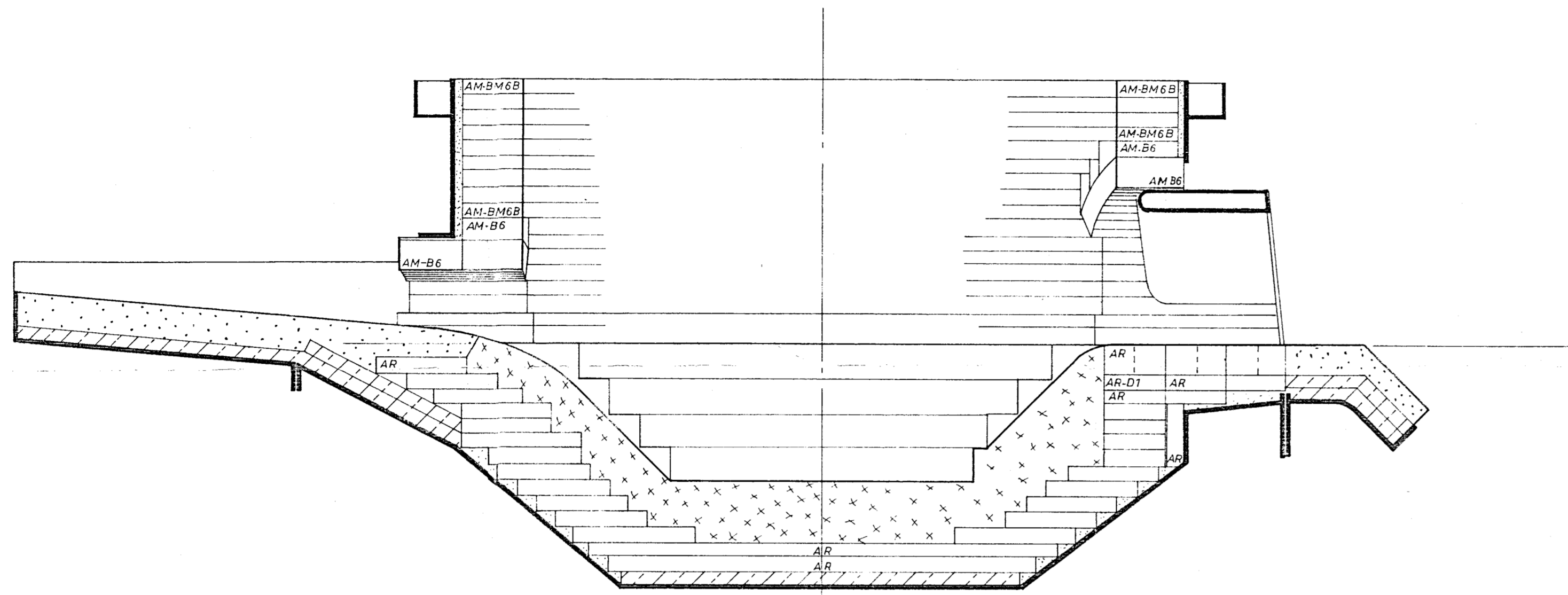
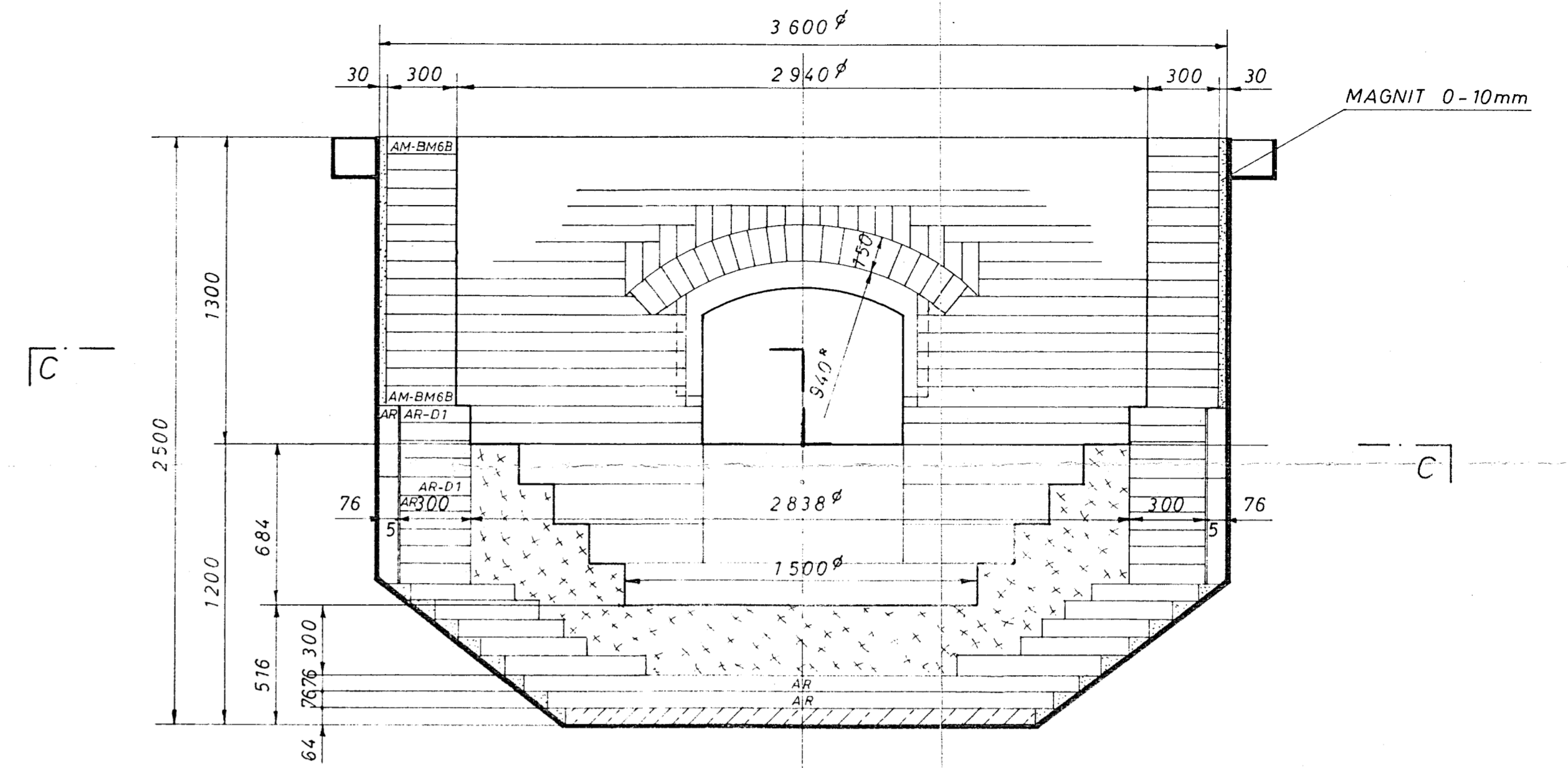


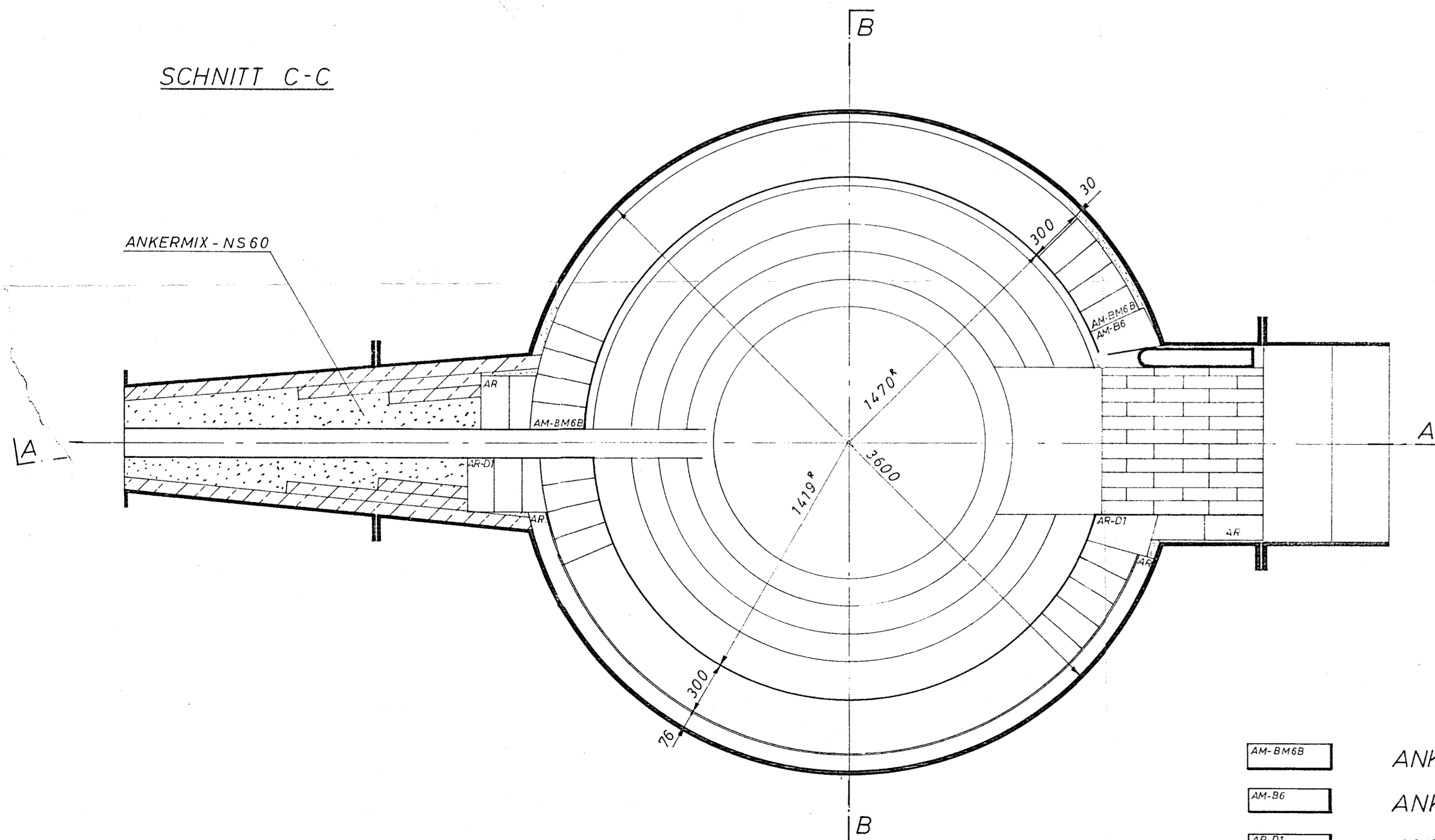
SCHNITT A-A

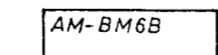
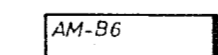
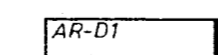
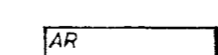
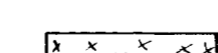
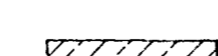


SCHNITT B-B



SCHNITT C-C



-  ANKROM - BM6B
-  ANKROM - B6
-  ANKER - D1
-  ANKER
-  ANKERHARTH - NB70
-  SCHAMOTTE

MATERIALBEDARF EINER ZUSTELLUNG OHNE RESERVE :

WANDBERTEIL :

4,1t	ANKROM-BM6B	NORMALSTEINE
5,9t	ANKROM-BM6B	STANDARDFORMSTEINE 2
0,4t	ANKROM-B6	NORMALSTEINE
0,3t	ANKROM-B6	STANDARDFORMSTEINE 2
0,2t	ANKROM-B6	STANDARDFORMSTEINE 3
0,8t	MAGNIT 0-10mm	
0,05t	ANKERBOND - NN60	


SCHLACKENZONE :

1,6t	ANKER-D1	NORMALSTEINE
1,8t	ANKER-D1	STANDARDFORMSTEINE 3
0,7t	ANKER	NORMALSTEINE
0,2t	ANKERBOND - NN60	

WANDUNTERTEIL + HERD :

8,2t	ANKER	NORMALSTEINE
2,0t	ANKER	STANDARDFORMSTEINE 2
0,5t	ANKERBOND - NN 60	
8,5t	ANKERHARTH - NB 70	
1,0t	ANKERMIX - NS 60	

Für den Kunden

Änderungen:	Maßstab:	Datum:	28.7.1970		<b>VEITSCHER MAGNESITWERKE ACTIEN-GESELLSCHAFT</b> WIEN-AUSTRIA
	1:20	gezeichnet:	SL		
Fremdzuschreibungen: EO 003857	Zusätzliche Zeichnungen:	geprüft:		STAVANGER STAAL A.S. NORWEGEN	17110 Zeichnung Nr.: VO-5854 / 1
		gesehen:			